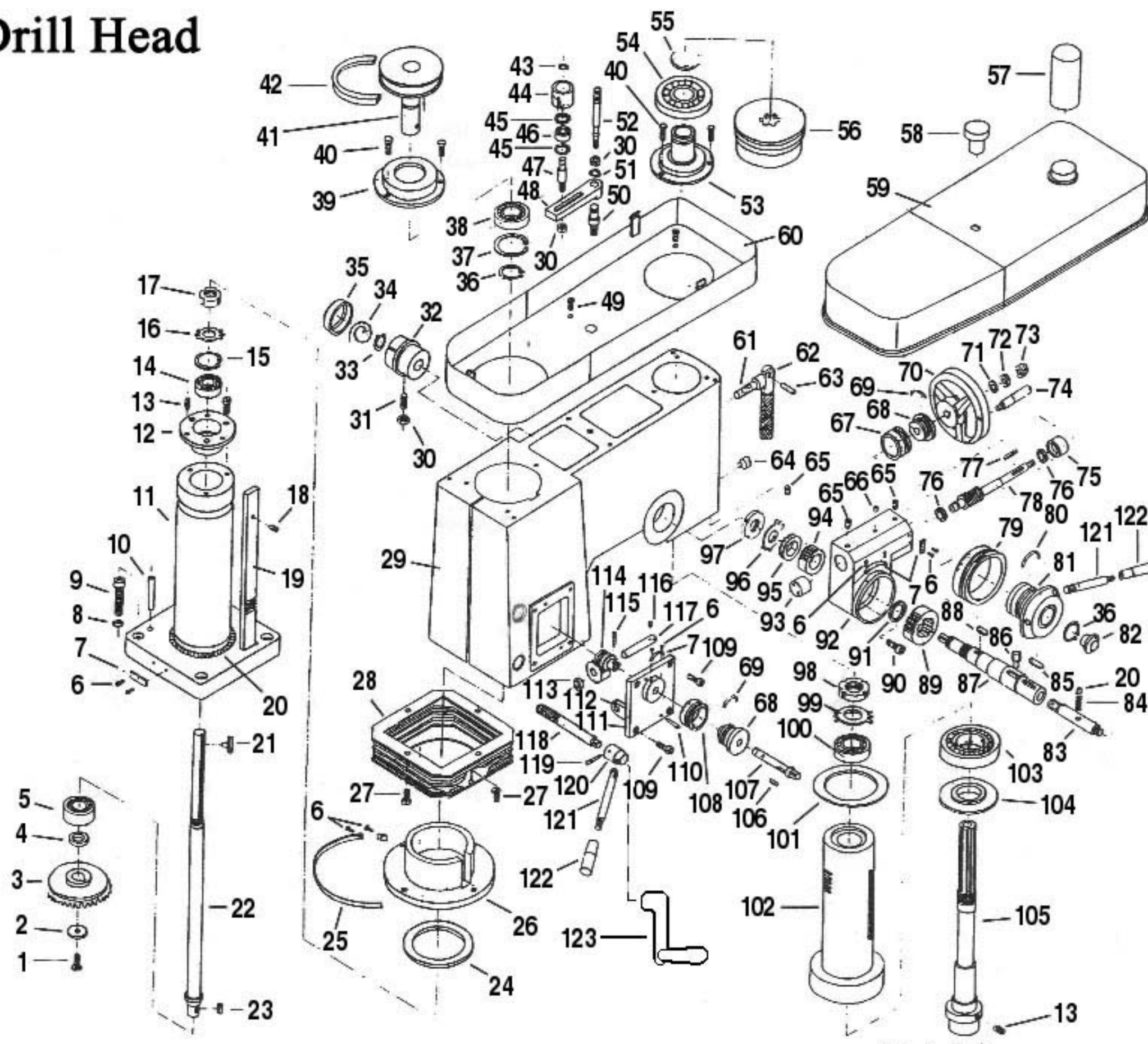


# Mill / Drill Head



# Mill / Drill Head

Diagram Number	Part Number	Reference Number	Description
1	G05001	GB68	Setscrew M5x10
2	G05002	3-30	Washer
3	G05003	3-29	Bevel gear
4	G05004	3-28	Spacer
5	G05005	GB276	Ball bearing E205Z
6	G05006	GB827	Rivet 2x5
7	G05007	Z04124-63	Indicator
8	G05008	S18195	Lock washer M12
9	G05009	GB70	Hex-socket setscrew M12x1.75x30mm
10	G05010	GB118	Taper pin 8x30
11	G05011	3-27	Column
12	G05012	3-41	Bearing seat
13	G05013	GB75	Setscrew M6x12
14	G05014	GB292	Ball bearing E46204Z
15	G05015	GB893	Snap ring
16	G05016	GB858	Lock washer
17	G05017	GB812	Spanner nut M20x1.5

Diagram Number	Part Number	Reference Number	Description
18	G05018	GB65	Setscrew M5x16
19	G05019	3-38	Rack
20	G05020	GB308	Ball
21	G05021	3-05	T-key
22	G05022	3-06	Mill shaft
23	G05023	GB1096	Key 6x12
24	G05024	3-26	Spacer
25	G05025	3-25	Angle plate
26	G05026	3-24	Cover mount
27	G05027	GB67	Panhead slotted screw M5x8
28	G05028	3-23	Column cover
29	G05029	3-40	Mill/drill head
30	G05030	GB6172	Jam nut M8
31	G05031	GB71	Setscrew M8x25
32	G05032	Z7030.2-20	Spring housing
33	G05033	GB894	Snap ring M20
34	G05034	CQ9106-53	Coil spring



# Mill / Drill Head

Diagram Number	Part Number	Reference Number	Description
35	G05035	ZQ4124-59	Spring cover
36	G05036	GB894	Snap ring M30
37	G05037	GB893	Snap ring M62
38	G05038	GB276	Ball bearing
39	G05039	3-03	Bearing seat #1
40	G05040	GB5783	Hex bolt M5x16
41	G05041	3-04	Mill pulley
42	G05042	GB1171	V-belt A900
43	G05043	GB894	Snap ring M10
44	G05044	3-14	Sleeve
45	G05045	GB893	Snap ring M26
46	G05046	GB276	Ball bearing
47	G05047	3-15	Roller shaft
48	G05048	3-16	Tensioner
49	G05049	GB67	Panhead slotted setscrew M6x8
50	G05050	3-07	Fulcrum
51	G05051	GB894	Snap ring M15
52	G05052	3-08	Cover lock bolt

Diagram Number	Part Number	Reference Number	Description
53	G05053	3-13	Bearing seat #2
54	G05054	GB276	Ball bearing E208
55	G05055	GB894	Snap ring M40
56	G05056	3-12	Spindle pulley
57	G05057	3-11	Mill cap
58	G05058	C30030	Knob
59	G05059	3-02	Upper cover
60	G05060	3-01	Lower cover
61	G05061	ZQ4124-38	Locking bolt
62	G05062	ZQ4124-39	Locking handle
63	G05063	GB119	Pin4x18
64	G05064	Z7030.2-14	Eccentric shaft
65	G05065	S11942	Conepoint slotted setscrew M6x10
66	G05066	C30050	Oiler #6
67	G05067	3-46	Dial
68	G05068	CJ0625.328	Dial



# Mill / Drill Head

Diagram Number	Part Number	Reference Number	Description
69	G05069	Use C30173	Spring piece
70	G05070	GB414.22	Handwheel B12x100
71	G05071	GB97	Washer M10
72	G05072	GB6172	Jam M10
73	G05073	S18160	Acorn nut M10
74	G05074	GB4141.5	Handle M6x50
75	G05075	3-45	Bushing #2
76	G05076	GB276	Ball bearing 1000801
77	G05077	GB1096	Key 4x25
78	G05078	3-43	Worm-gear shaft
79	G05079	3-20	Dial
80	G05080	CQA9111.808	Spring piece
81	G05081	3-19	Handle seat
82	G05082	JB1357	Knob
83	G05083	3-18	Locking shaft
84	G05084	CQ9106-31	Spring
85	G05085	S21805	Key 8x25
86	G05086	CQA9111.8-06	Locking piece

Diagram Number	Part Number	Reference Number	Description
87	G05087	3-22	Feeding shaft
88	G05088	GB1096	Key 8x14
89	G05089	3-21	Worm gear
90	G05090	S11971	Sockethead capscrew M6x16
91	G05091	CQA9111.8-2	Washer
92	G05092	3-44	Worm-gear box
93	G05093	3-42	Bushing #1
94	G05094	3-34	Main gear
95	G05095	3-33	Gear
96	G05096	GB858	Lock washer M22
97	G05097	GB812	Spanner nut M22x1.5
98	G05098	GB812	Spanner nut M30x1.5
99	G05099	GB858	Lock washer M30
100	G05100	GB292	Ball bearing E46206101
101	G05101	Z7030.2-15	Rubber mat
102	G05102	3-09	Quill

# Mill / Drill Head

Diagram Number	Part Number	Reference Number	Description
103	G05103	GB292	Ball bearing E46208
104	G05104	3-48	Cover
105	G05105	3-10	Mill/drill spindle
106	G05106	GB1096	Key 4x10
107	G05107	3-35	Shaft
108	G05108	3-36	Dial
109	G05109	S11671	Sockethead capscrew M5x16
110	G05110	S22140	Taper pin 3x20
111	G05111	3-37	Mount plate
112	G05112	ZQ4124.54	Worm gear
113	G05113	CQA9111.705	Spacer
114	G05114	3-39	Worm gear
115	G05115	GB117	Taper pin 3x20
116	G05116	GB71	Setscrew M4x8
117	G05117	CQZ9111.706	Shaft
118	G05118	3-32	Locking bolt
119	G05119	GB117	Taper pin 4x26
120	G05120	3-31	Locking handle seat

Diagram Number	Part Number	Reference Number	Description
121	G05121	GB4141.15	Locking handle BM10x100
122	G05122	GB4141.14	Locking handle sleeve BM10x50
123	G05123	New Mill Head Crank	Mill Head Crank - Replaced Daigram # 119-122
	G05118	New Replacement	Replaced Daigram # 119-122